



A compact, easily serviced generator for all your power requirements.

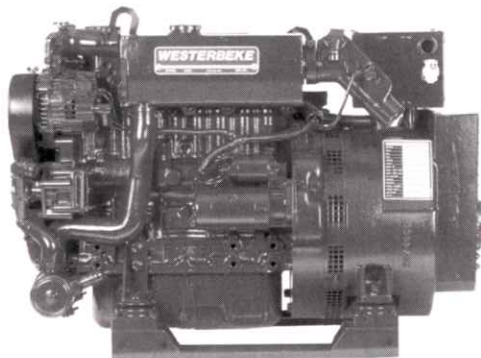
Cruise carefree with Westerbeke power at your fingertips.

The 15BTDC is a flawlessly smooth, quiet and compact diesel generator. This state-of-the-art generator easily provides all your shipboard power needs, including electric ranges, microwave ovens, air conditioners, refrigerators, TV's, hair dryers, vacuum cleaners and other small appliances and power tools.

Powerful, lightweight, economical to operate, and reliable, this generator is specially engineered to operate in a hostile marine environment. The 15BTDC was designed and built by Westerbeke using experience gained in supplying generators to the United States Navy and Coast Guard as well as commercial vessels and pleasure craft.

The 15BTDC is designed to run at 1800 rpm for less noise and greater longevity. It is equipped with a simple control system rather than complex, troublesome electronic components, and the engine is fresh water-cooled to minimize engine maintenance. It is also easily installed and serviced (one side servicing) and easily field convertible to either 50 or 60 Hertz AC output.

Westerbeke products are supported by a network of over 65 master distributors and their dealers providing parts, service and technical support in over 65 countries worldwide.

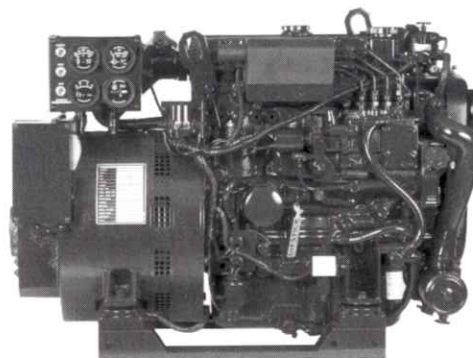


15BTDC Diesel Generator

Generator Dimensions

Length	35.0" (889.0 mm)
Width	19.0" (482.6 mm)
Height	24.0" (609.6 mm)
Weight	569 lbs. (258.1 kilos)

See other side for more dimensional information



15BTDC Diesel Generator

Many features are standard equipment

- Fresh water cooling
- Instrument panel
- Remote start-stop plug-in connection
- Vibration mounts - fail safe rubber type
- 45 degree water injected elbow
- Coolant recovery tank
- 50 amp alternator
- Safety stop switch
- Drip tray
- Belt guard
- Gear driven raw water pump
- Lube oil drain hose
- Safety shut-downs - high coolant temperature, low oil pressure, high exhaust temperature
- Oil fill - top and side
- Extra oil pressure switch for remote signal or control functions
- Self-bleeding fuel system
- A.C. circuit breaker
- Operators' manual and parts list
- "CE" Mark
- Power take-off interface



Optional "new style" 15BTDC Sound Guard

Sound Guard Dimensions

Length	39.80" (1,010.9 mm)
Width	22.83" (579.9 mm)
Height	25.75" (654.1 mm)
Weight	66.3 lbs. (30.1 kilos)

Generator Design

DESIGN: Brushless, four pole, revolving field, power takeoff.
VOLTAGE REGULATION: Standard +/- 5% no load to full load.
FREQUENCY REGULATION: 3 Hz (5%) no load to full load.
INSULATION: Class "F", as defined by NEMA MG1-1.65.

TEMPERATURE RISE: Within NEMA MG1-22.40 definition when operating at full load.

COOLING: Cast centrifugal blower, direct connected.

ELECTROMAGNETIC INTERFERENCE LEVEL: Exceeds requirements for most marine radio-telephones and standard TVs.

Model	Electrical Characteristics				Wire	Ratings		Engine	
	Volts	Amps	Hertz	Phase		Power Factor	KW	RPM	Start
15.0 BTDC-614	120/240	125/62.5	60	1	4	1.0	15	1800	Remote
12.0 BTDC-514	230	52.2	50	1	4	1.0	12	1500	Remote

Three phase units, 50 & 60 Hz, are available in these ratings.

Generator field adjustable to 50 or 60 Hz.

Specifications

Number of cylinders	4 Cylinder vertical in-line
Type	4 cycle
Displacement	107.27 cu. in. (1.758 liter)
Bore and stroke	3.07" x 3.62" (78 mm x 92 mm)
Compression ratio	22:1
Rated rpm	60 Hz - 1800 rpm 50 Hz - 1500 rpm
HP @ 1800 rpm	25 hp
Maximum angle of operation	Not to exceed 25° in all directions
Exhaust elbow connection	2.0" OD (50.8mm)
Raw water connection	1.0" OD (25.4mm)
Dry weight	569 lbs. (258.1 kilos)
Combustion system	Swirl type
Aspiration	Naturally aspirated
Lubrication system	Forced lubrication by gear pump
Cooling system	8 quarts (7.6 liters)
Starting aid	12 volt sheathed type glow plug
Full load fuel consumption	1.42 GPH (5.38 LPH)
Fuel injection pump	Bosch type
Governor	Centrifugal type
Injectors	Throttle type
Fuel Filter	Primary
Lube oil filter	Full flow, spin-on element
Fuel supply and return piping	1/4" ID (6.35 mm) minimum 3/8" ID (9.52 mm) maximum
Fuel Transfer Pump	12 Volt electric type

Lubricant Capacity	5.5 quarts (5.2 liters)
Starting motor	12 volt, solenoid actuated
Battery charging alternator	50 ampere (12 Volts)
Cold cranking amps	270 amps @ 79 degrees F
Alternator/regulator	Automatic, solid state built-in
Electrical system	12 volts DC, negative ground

Construction - Engine Components

Cylinder head	Cast Iron
Cylinder block	Cast Iron
Crankshaft	Forged crankshaft, five main bearings
Valves	Overhead, rotating type
Fuel System	Self-bleeding
Intake system	Tuned intake silencer for maximum noise reduction
Cooling system	Fresh water-cooled with tube and shell type heat exchanger
Exhaust manifold	Cast aluminum, fresh water-cooled

Optional Equipment

Remote start-stop panel
15' panel ext. harness
Dual station senders
Ship -shore switch
Power takeoff adapter
Fuel/water Separator
Hydro-hush muffler and fittings
"A" on board spare parts kits; "B" extended cruising spare parts kit
Anti-siphon valve for overboard cooling discharge water
Technical manual
Sound Guard sound enclosure

Dimensions Inches (millimeters)

